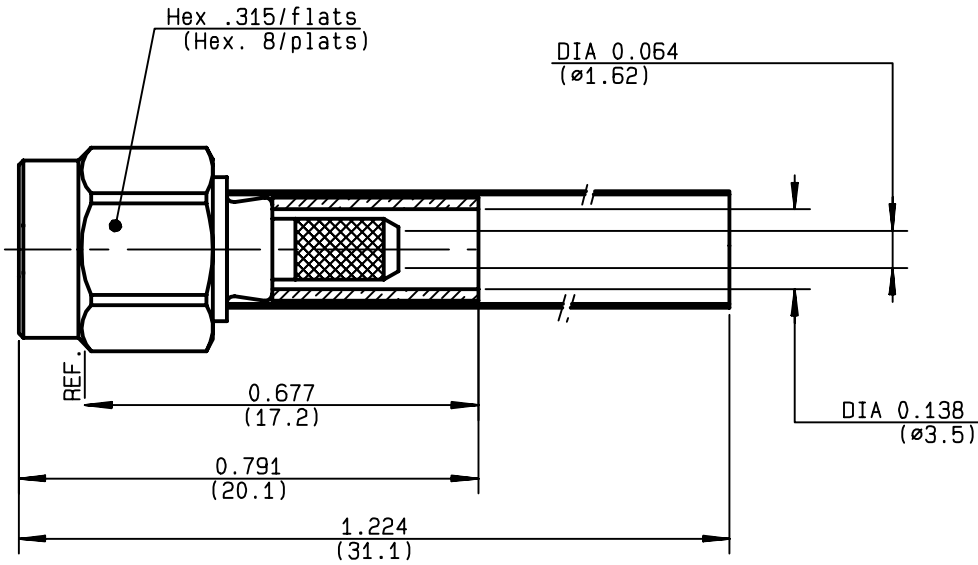


**STRAIGHT PLUG CRIMP  
CABLE 2.6/50 D**

**R125.072.080**  
**SERIES SMA**



|                                 |                                       |
|---------------------------------|---------------------------------------|
| NOMINAL IMPEDANCE               | <b>50</b> Ω                           |
| FREQUENCY RANGE                 | <b>0-12.4</b> GHz                     |
| TEMPERATURE RATING              | <b>-65/+165</b> °C                    |
| V.S.W.R                         | <b>1.15</b> + <b>.02</b> x F(GHz)Maxi |
| RF INSERTION LOSS               | <b>0.06</b> √F(GHz) dB Maxi           |
| VOLTAGE RATING                  | <b>250</b> Veff Maxi                  |
| DIELECTRIC WITHSTANDING VOLTAGE | <b>750</b> Veff Mini                  |
| INSULATION RESISTANCE           | <b>5000</b> MΩMini                    |
| HERMETIC SEAL                   | <b>NA</b> Atm.cm <sup>3</sup> /s      |
| LEAKAGE (pressurized only)      | <b>NA</b>                             |
| MECHANICAL DURABILITY           | <b>500</b> Cycles                     |
| WEIGHT                          | gr                                    |
| SPECIFICATION                   |                                       |

CABLES : **K02252D**  
**RD 316**

OTHERS CHARACTERISTICS

|                            |            |           |
|----------------------------|------------|-----------|
| CABLE RETENTION            | <b>110</b> | N Mini    |
| CENTER CONTACT RETENTION   |            |           |
| Axial force - mating end   | <b>NA</b>  | N Mini    |
| Axial force - opposite end | <b>27</b>  | N Mini    |
| Torque                     | <b>NA</b>  | cm.N Mini |
| RECOMMENDED TORQUES        |            |           |
| Mating                     | <b>100</b> | cm.N      |
| Panel nut                  | <b>NA</b>  | cm.N      |
| Clamp nut                  | <b>NA</b>  | cm.N      |

| CONNECTOR PARTS | MATERIALS       | FINISH                 |
|-----------------|-----------------|------------------------|
| BODY            | STAINLESS STEEL | GOLD 0.5 OVER NICKEL 2 |
| OUTER CONTACT   |                 |                        |
| CENTER CONTACT  | BRASS           | GOLD 1.3 OVER NICKEL 2 |
| INSULATOR       | PTFE            | -                      |
| GASKET          | SILICONE RUBBER | -                      |
| OTHERS PIECES   | STAINLESS STEEL | GOLD 0.5 OVER NICKEL 2 |

(all values are given in micrometers)

|                |                   |                    |
|----------------|-------------------|--------------------|
| ISSUE          | CREATION DATE     | FILE PART-NUMBER   |
| <b>9915A03</b> | <b>21/05/1990</b> | <b>90-1200-010</b> |



**RADIALL®**

RODRIGUEZ

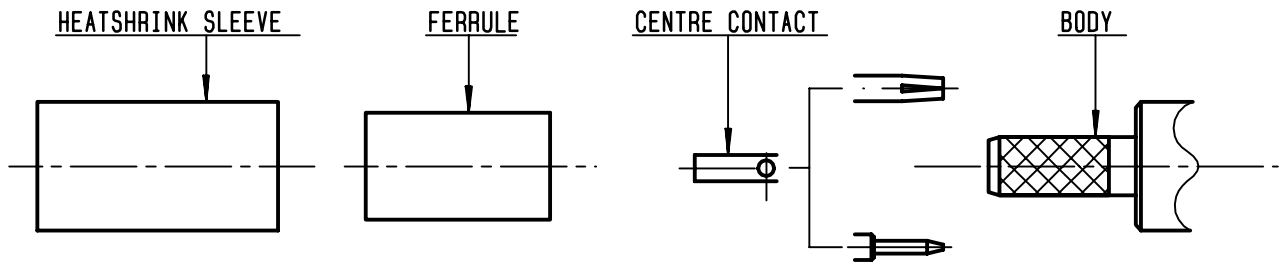
The information given here is subject to change without notice.  
Design changes may be in order to improve the product .

*Connect to the future*



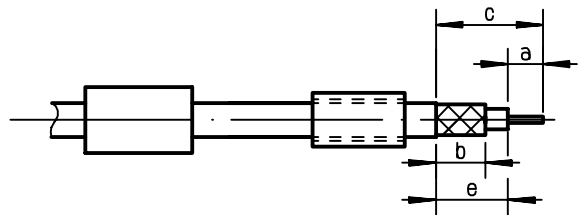
**R125.072.080**

ISSUE **9915A03** SERIES **SMA**



①

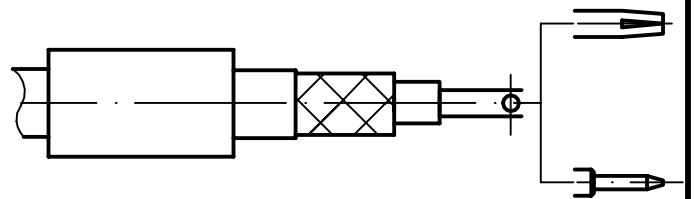
Slide onto the cable the ferrule and the heatshrink sleeve .  
Strip the cable .  
-  
-



| Stripping | a     | b     | c     | d | e     |
|-----------|-------|-------|-------|---|-------|
| inch      | 0.079 | 0.276 | 0.354 | 0 | 0.276 |
| mm        | 2     | 7     | 9     |   | 7     |

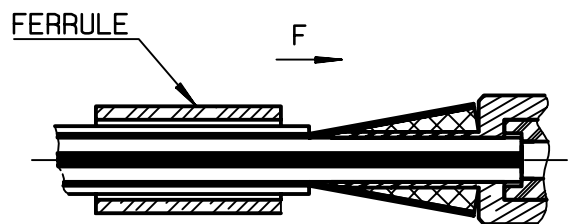
②

Slide on centre contact until it bottoms against cable dielectrique .  
Solder center contact .  
Clean soldering area .  
-  
-  
-



③

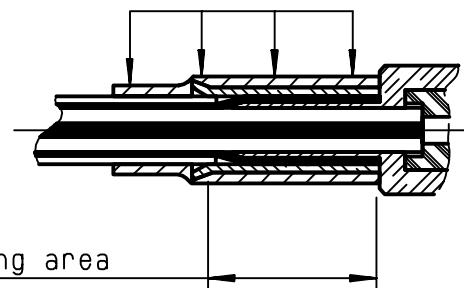
Fan the braid .  
Slide cable into the body until bottoms against insulator .  
Slide ferrule over the braid .  
(In direction F)



④

Crimp the ferrule with crimping tool R 282 271 000 ( Hex. : 3.84 ) or crimping M22520/5-01 + dies M22520/5-37  
Cut the excess of braid .  
Slide sleeve over ferrule and heatshrink in place .  
-  
-

Shrink the heatshrink sleeve



Crimping area